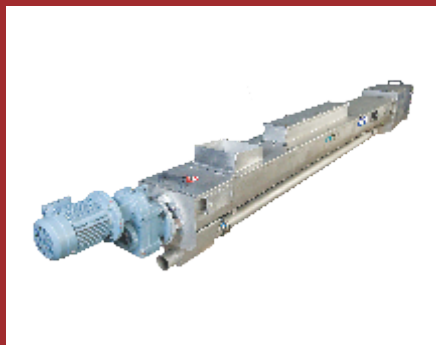
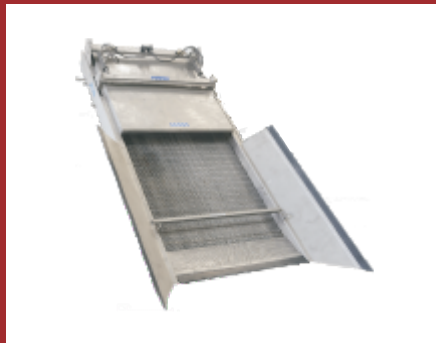




SCREEN & SCREENING CONVEYING EQUIPMENT

PRODUCTS AT A GLANCE



- Trash Rack Screen
- Suspended Trash Rake Screen
- Multirake Bar Screen
- Perforated Screen
- Band Screen
- Step Screen
- Rotary Drum Screen
- Static Screen
- Belt Conveyor
- Screw Conveyor
- Washer Compactor



ENGINEERING EXCELLENCE AND EXPERIENCE

Since 1927, the engineering team at Mahr Maschinenbau has pioneered safe and reliable screening solutions in thousands of applications around the world. Jash Engineering Ltd acquired Mahr Maschinenbau, Austria in September 2014 to offer the most comprehensive range of screening equipment to the industry. This coming together ensures that the wide experience and innovative development skills of Mahr Maschinenbau combined with the extensive manufacturing strength of Jash brings the best screening solution in the market today.

SUPERIOR QUALITY

We bring exceptional quality to every project, using application based solutions, proven designs, manufacturing flexibility and rigorous testing procedures. We offer one of the most flexible and comprehensive metal fabrication, machining, assembly and testing operations at our in-house facilities in the USA & India. This allows us to monitor and ensure quality in all aspects of production & to provide consistent reliable & superior products.



Unit 1, Indore with built up area spanning over 125,000 Sq. feet

COMPREHENSIVE PRODUCT OFFERING

Since the introduction of the first mechanized screen in the world in 1927 we are renowned for introducing newer technologies which raises the bar in screening technology forcing others to follow our development. We bring a comprehensive solution to your screening needs with coarse and fine screen options whether it be a raw water intake trash rake screen or an MBR fine screen, we cover it all. Coupled with our reliable and efficient conveyors and compactors, we meet the needs of any plant. This breadth of our product offering enable us to bring unequalled expertise to your decision making for most of your application.

RESPONSIVE SERVICE

We pride ourselves on providing professional responsiveness to your needs throughout the design, manufacturing and installation processes. Our engineering team is available for consultation during all phases of your project. Dedicated project managers serve as a single point of contact once the order is in-house and our knowledgeable field service team is always ready to provide on-site support.



Unit 2, Indore with built up area spanning over 155,000 Sq. feet



Unit 3 and 4, SEZ, Pithampur with built up area spanning over 100,000 Sq. feet

SCREENING EQUIPMENT

TRASH RACK - SERIES: B-111, 112

Description	: Trash racks are for removal / screening of coarse floating waste coming with water in water and waste water pumping stations, river or barrage intake structures and treatment plants.
Bar spacing	: 20 mm and above.
Single piece width	: Maximum up to 5,000 mm.
Single piece height	: Maximum up to 3,000 mm.
Mode of operation	: Manual/ Electrically by crane hoist.
Material of construction	: Carbon steel, Stainless steel 304, 304L, 316, 316L, Duplex, Super duplex.



J-TYPE TRASH RACK SCREEN - SERIES: B-113

Description	: J-type trash screen is manually cleaned coarse screening equipment used to prevent large and medium sized floating waste coming with water in water and waste water pumping stations, river or barrage intake structures & treatment plants.
Bar spacing	: 20 mm and above.
Single piece width	: Maximum up to 4,000 mm.
Single piece height	: Maximum up to 3,000 mm.
Mode of operation	: Manual/ Electrically by crane hoist.
Material of construction	: Carbon steel, Stainless steel 304, 304L, 316, 316L, Duplex, Super duplex.



SUSPENDED TRASH RAKE SCREEN - SERIES: B-114

Description	: Suspended trash rake screen is mechanically cleaned coarse screening equipment used to prevent large sized floating wastes from entering in to the intake structure of a pumping station.
Bar spacing	: 40 mm and above.
Channel width	: 1,000 mm to 40,000 mm.
Channel depth	: 2,000 mm to 10,000 mm.
Mode of operation	: Electrically by rope drum hoist.
Material of construction	: Carbon steel, Stainless steel 304, 304L, 316, 316L, Duplex, Super duplex.



JMR MULTIRAKE BAR SCREEN - SERIES: B-211, 212, 213



Description	: Multirake bar screen is a mechanically cleaned medium / coarse screening equipment used to prevent medium / coarse sized floating wastes from traveling to the pumps located into the wet well / pump chamber of the water and waste water pumping station.
Bar spacing	: 6 mm and above.
Channel width	: 600 mm to 2,000 mm.
Channel depth	: 1000 mm to 15,000 mm.
Mode of operation	: Motorized.
Material of construction	: Stainless Steel 304, 304L, 316, 316L, Duplex, Super duplex.

“MM2MM”™ MULTIRAKE BAR SCREEN - SERIES: B-214



Description	: MM2MM™ Multirake bar screen is a mechanically cleaned fine / coarse screening equipment used to prevent fine / medium sized floating wastes from traveling to the pumps located into the wet well / pump chamber of the water and waste water pumping station.
Bar spacing	: 2 mm and above.
Channel width	: 800 mm to 4,000 mm.
Channel depth	: Up to 60,000 mm, higher depth on request.
Mode of operation	: Motorized.
Material of construction	: Stainless Steel 304, 304L, 316, 316L, Duplex, Super Duplex.

SCREENMAT™ STEP SCREEN - SERIES: B-311, 312



Description	: Screenmat™ is a compact mechanically cleaned fine screening equipment used to prevent fine sized floating wastes from traveling further into the water and waste water treatment plants.
Bar spacing	: 2 mm to 6 mm.
Channel width	: 500 mm to 2,500 mm, down to 300 mm in case of very small screen.
Channel depth	: 600 mm to 2,200 mm.
Mode of operation	: Motorized / Hydraulic.
Material of construction	: Stainless steel 304, 304L, 316, 316L, Duplex, Super duplex.

“PER-SCALATOR™” FILTER BAND SCREEN - SERIES: B-411

Description	: Per-scalator™ screen is mechanically operated self-cleaning fine screening equipment used to prevent floating wastes from traveling further in to waste water treatment plants, especially in waste water treatment plants based on MBR process.
Perforation size	: 2 mm to 10 mm diameter.
Channel width	: 600 mm to 2,000 mm.
Channel depth	: Up to 3,000 mm.
Mode of operation	: Motorized.
Wash water requirement	: 50 to 100 LPM- Depending upon screen width at 5 bar.
Material of construction	: Stainless steel 304, 304L, 316, 316L, Duplex, Super duplex.



TRAVELING BAND SCREEN - SERIES: B-412, 413, 414

Description	: Traveling band screen is mechanically cleaned fine screening equipment used to prevent medium to fine sized floating wastes from traveling to the pumps located in to the wet well / pump chamber of a water and waste water pumping station or to prevent fine sized floating wastes from traveling further in to waste water treatment plants based on MBR process.
Filter mesh/perforation size	: 2 mm to 10 mm, other sizes on request.
Filter element width	: 300 mm to 3500 mm.
Shaft center distance	: Up to 30,000 mm.
Wash water requirement	: 100 to 500 LPM- Depending upon screen width at 5 bar.
Material of construction	: Carbon Steel, Stainless Steel 304, 304L, 316, 316L, Duplex, Super Duplex



“ROTOCLEAN” ROTARY DRUM SCREEN - SERIES: B-511

Description	: “Rotoclean” is a mechanically cleaned fine screening equipment used to prevent fine sized floating wastes from traveling further in to waste water treatment plants.
Wire spacing / Perforation	: 0.5 mm to 2 mm / 2 mm to 6 mm.
Drum diameter	: 600 mm to 2,000 mm.
Channel width	: 800 mm to 2,200 mm.
Channel depth	: 600 mm to 2,000 mm.
Mode of operation	: Motorized.
Wash water requirement	: 100 to 500 LPM- Depending upon drum diameter at 5 bar.
Material of construction	: Stainless steel 304, 304L, 316, 316L, Duplex, Super duplex.

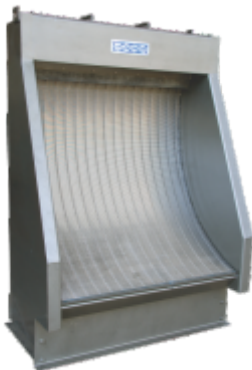


“ROTOBRUSH” ROTARY SCREEN - SERIES: B-512



Description	: “Rotobrush” is a mechanically cleaned fine screening equipment used to prevent fine sized floating wastes from traveling further in to waste water treatment plants based on MBR or similar technology so as to prevent damage to the membranes. These are also ideal for effluent treatment plants of food processing, textile, pharmaceuticals, chemicals, sugar, breweries etc.
Slot width/perforation	: 0.5 mm to 2 mm / 2 mm to 6 mm.
Mode of operation	: Motorized.
Material of construction	: Stainless steel 304, 304L, 316, 316L, Duplex, Super duplex.

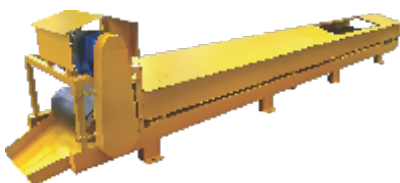
“HYPERBOLE” STATIC SCREEN - SERIES: B-611



Description	: “Hyperbole” is a manually cleaned very fine screening equipment used to prevent fine sized floating wastes from traveling further in to waste water treatment plants based on MBR or similar technology so as to prevent damage to the membranes. These are also ideal for effluent treatment plants of food processing, textile, pharmaceuticals, chemicals, sugar, breweries etc. Hyperbole screens are static screens & do not require any power.
Slot width	: 0.5 mm to 2 mm.
Material of construction	: Stainless Steel 304, 304L, 316, 316L, Duplex, Super duplex.

SCREENING CONVEYING / WASHING / COMPACTING EQUIPMENT

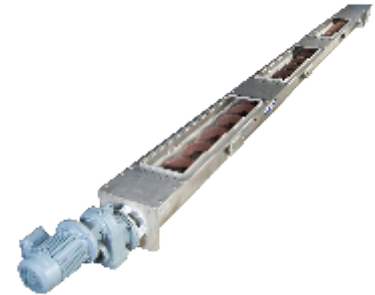
FLAT BELT CONVEYOR - SERIES: B-911



Description	: Flat belt conveyor is ideal for long distance transport of waste / screenings removed by screens installed in a non-enclosed area and deliver it to the point of disposal.
Belt width	: 600 mm to 1,000 mm.
Belt Length	: 1000 mm to 20,000 mm.
Mode of operation	: Motorized.
Material of construction	: Carbon steel painted / Stainless steel.

SCREW CONVEYOR - SERIES: B-912

Description	: Screw conveyor is ideal for non-hazardous transport of waste / screenings removed by the screens installed in an enclosed area with possibility of connection to an odor control system.
Diameter	: 180 mm to 390 mm.
Capacity	: Up to 20 m ³ /hr.
Overall length	: Up to 10,000 mm in multiples of 1,000 mm.
Type of Screw	: Shaftless / Shafted.
Material of construction	: Trough- Stainless steel 304 / 316 lined with UHMWPE. Spiral- ST 52-3 / Stainless steel.



SCREW CONVEYOR WITH WASH COMPACTOR - SERIES: B-913

Description	: Screw conveyor with washer compactor is ideal for transport, washing and compaction of waste / screenings removed by the screens with a view to recover carbon content & reduce odor from waste and reduce the volume to achieve lower transportation cost and area required for landfill.
Diameter	: 200 mm to 400 mm.
Capacity	: Up to 20 m ³ /hr.
Overall length	: Up to 10,000 mm in multiples of 1,000 mm.
Type of screw	: Shaftless.
Compaction	: Up to 50% DR.
Wash water requirement	: 50 to 150 LPM at 5 bar.
Material of construction	: Trough- Stainless steel 304 / 316 lined with UHMWPE. Spiral- ST 52-3 / Stainless steel.



“JET BREAKER” WASHER COMPACTOR - SERIES: B-914

Description	: “Jet Breaker” washer compactor is ideal for washing, compacting, and safely disposing of screening / waste using a continuous bagging unit.
Capacity	: 1.5 to 7.5 m ³ /hr.
Compaction	: Up to 50% DR.
Material of construction	: Trough- Stainless steel 304 / 316 lined with UHMWPE. Spiral- ST 52-3 / Stainless steel.



- Manufacturer reserves the right to depart from the catalogue specifications and illustrations at any time, with or without notice.
- Pictures shown are general, unless specific job names are listed.



Mahr screening equipment are installed in some of the largest facilities in the World. We bring the same expertise & experience to your projects as well, whether big or small !

For more information about our products or to contact sales representative, visit the Jash website www.jashindia.com or call at our office.



Multirake Bar Screen for Port Monmouth at our Orange Facility



Multirake Bar Screens at Vienna Main STP, Austria



Multirake Bar Screen with Jet breaker installed at Amas STP, Bahrain



Multirake Bar Screens at Pillar Point STP, Hong Kong

JASH SUBSIDIARIES:

- Rodney Hunt Inc., USA ■ Mahr Maschinenbau GmbH, Austria ■ Jash USA Inc., USA
- Shivpad Engineers Pvt Ltd., India ■ Engineering & Manufacturing Jash Ltd., Hongkong



JASH ENGINEERING LTD.

31, Sector 'C', Industrial Area, Sanwer Road,
Indore-452 015. (M.P), INDIA
Ph.: +91-731-6732700, 2720143, 2721143.
E-mail: info@jashindia.com
Website: www.jashindia.com

MAHR MASCHINENBAU GMBH

Kupferschmiedgasse 8
A-2201 Hagenbrunn, Austria
Phone: +43 2246 3521
Email: office@mahr.at
Website: www.mahrmaschinenbau.com